



TECHNOLOGY BROCHURE

Product Overview



COMPANY

Viessmann Climate Solutions MEA

Since 2007, Viessmann Climate Solutions MEA, supported by its sales, technical, and training teams, has managed operations for the entire range of Viessmann products across the Middle East, Africa, and South Asia.



We create living spaces
for generations to come.

**ABOUT VIESSMANN CLIMATE SOLUTIONS**

Founded in 1917 as a heating technology manufacturer, and now part of Carrier, today we are one of the world's leading providers of efficient climate (heating, water and air quality) and renewable energy solutions. Creating living spaces for generations to come – this is the responsibility that we take on every day together with our (trade) partners.





TABLE OF CONTENTS



4



8



10



14



INSET BACK

INSET FRONT

The Viessmann Group

4 VITOPEND/VITODENS

Vitopend, Vitodens – Highly efficient conventional and condensing gas boilers for heating & DHW, suitable for installation in living spaces

6 VITOPLANAR/VITOTHERM/VITOWELL

Electric comfort heating and domestic hot water solutions, for installation in living spaces

8 VITOMAX/VITOCROSSAL

Low temperature oil/gas boilers in steel, Condensing gas boilers in stainless steel – for commercial and industrial applications

10 VITOMAX

Low and high pressure hot water boilers for industrial applications, complete hot water solutions for industries

12 VITOMAX

Low and High pressure steam boilers for industrial applications, clean steam generators, complete boiler house solutions

14 VITOSOL

Powerful solar collectors and matched components for hot water generation

16 VITOCCELL/ENERGYCELL

Glass lined & stainless steel storage cylinders for hygienic hot water, multifunctional heating buffer cylinders

18 THERMOCUBE/VITOTRANS

Unique flat pack heating buffer storage, heat exchangers for instantaneous DHW generation

20 ENERGYCELL/LSQ/VITOCAL

A-W and W-W heat pumps for large residential & commercial applications. Modular heat pump concept. Heat pumps for swimming pools. Domestic hot water heat pump with storage

INSET BACK

Optimum performance and long operational life of installed Viessmann equipment & application areas

Conventional and condensing wall hung gas boilers. Suitable for installation in living spaces, designed for maximum comfort and efficiency.





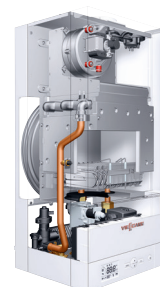
Efficient and affordable gas fired combi/system boiler.

With the Vitopend 100-W, Viessmann offers a wall mounted gas fired boiler with a particularly advantageous price/performance ratio, excellent heating and operating convenience, compact dimensions and a timeless, elegant design. The compact Vitopend 100-W can be fitted practically anywhere, in the kitchen, bathroom, attic, niches and corners, because service clearance is not necessary.

FEATURES AND BENEFITS

- + Central heating/combi boilers for balanced flue operation
- + Standard efficiency: up to 90.5% (Hs) / 94% (Hi)
- + Back lit digital display with push button controls
- + WLAN/Internet enabled (via accessory)
- + OpenTherm compatible
- + High DHW comfort
- + Particularly quiet, even suitable for installation in living spaces

VITOPEND 100-W 12 to 34 kW



Vitopend 100-W

Highly efficient gas condensing combi/system boiler.

The Vitodens range of highly efficient gas fired wall hang boilers are well suited to bring the benefits of condensing technology to homes, apartments all the way to commercial establishments. The Vitodens boilers are underpinned by Viessmann patented Matrix-Plus burners with Lambda Pro combustion control and inox radial stainless steel condensing heat exchangers. This guarantees unparalleled efficiency and fuel savings.

FEATURES AND BENEFITS VITODENS 050/100-W

- + Available as system or DHW combi boilers up to 32 kW for open or balanced flue operation
- + Suitable for natural gas & LPG (automatic gas type adaption). Certified H2 ready
- + Modulation 1:8 for Vitodens 050-W and 1:10 for Vitodens 100-W
- + Same output for heating and hot water
- + Standard seasonal efficiency up to 98% (Hs) / 109% (Hi)
- + All new control platform with black panel touch screen control. Built in WiFi
- + Convenient control of direct (050 & 100-W) or mixed (100-W only) heating circuits
- + Maintenance access from the front, no need for space on the sides
- + DHW and heating control using the ViCare app (Where available)
- + Energy efficiency rating class A

VITODENS 050/100/200-W 3.2 to 150 kW



Vitodens 050-W



Vitodens 100-W

VISSMANN ONE BASE

FEATURES AND BENEFITS VITODENS 200-W

- + System boilers up to 150 kW as single units
- + Suitable for natural gas / LPG (automatic gas type adaption). Certified H2 ready
- + Standard seasonal efficiency up to 98% (Hs) / 109% (Hi)
- + Easy control using the Vitotronic controller with clear text and graphical interface
- + Cascade options with standard accessories to achieve heating output up to 594 kW (up to 900 kW on request)
- + Internet and BMS connectivity (via accessory)
- + Energy efficiency rating class A



Vitodens 200-W

Efficient electric boiler, radiant panel, under floor mats and instantaneous & storage water living spaces - performance matched with aesthetics.





Electric boiler for DHW and heating

Practical and safe, the Vitotron uses electricity to provide heating and domestic hot water. Installing is easy without the need for a gas connection, chimney, boiler room or fuel store - just plug power in. The automatic controller VNM3 ensures effective heating and DHW production with 99,4% efficiency. The Vitotron can be used as a primary or a back up heat generator. With it's attractive design and size, the Vitotron can be installed practically anywhere, including living spaces.

FEATURES AND BENEFITS VITOTRON

- + Water temperature setting range between 20 and 85 °C
- + Automatic heating output modulation
- + Automatic output adjustment by weather compensated control
- + Daily and weekly heating cycle programming on controller itself

VITOTRON 4 to 24 kW



Vitotron 100

Electric radiant heating panels and underfloor heating mats

The EI series of radiant heating panels can be used as a sole or complementary source of heat. On offer are flexible installation options and different surface finishes to match living space interiors. Key features are the high radiant effect, two safety temperature limiters, insulated backing, maintenance-free operation and no magnetic field. The EF series of electric heating mats are used where warmth is required quickly, typically where central heating is not required or not feasible. Applications include providing underfloor warmth in bathrooms and kitchens. The mats can be easily installed as a floating substrate for a variety of floor types.

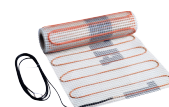
FEATURES AND BENEFITS VITOPLANAR

- + Decentralised heating for bathrooms, kitchens and hallways
- + Quick and straightforward installation
- + Supplied with thermostat and all connection & safety kit
- + EI radiant panels available in glass and mirror finishes. Possibility to customise with own artwork (some models, on request)
- + EF underfloor mats suitable for ceramic, laminate or parquet floors, suitable for open showers

VITOPLANAR 450 to 1275 W



Vitoplanar EI2



Vitoplanar EF2

Electric instantaneous & storage water heaters

The Vitowell Easy & Vitotherm Instantaneous heaters are available from 2.4 to 24 kW, for hand wash basins, showers and kitchen sinks. Precise hydraulic/electronic control ensures water delivery at the selected temperature. Outlet temperature & energy consumption display in real time is available on selected models. The Vitowell Comfort & Cylinder storage heaters are available from 10 to 100 L with dual safety thermostat and corrosion protection.

FEATURES AND BENEFITS

- + Energy-saving as only the required amount of water is heated and delivered over shorter pipe runs
- + Providing hot water to multiple user points possible, depending on product type
- + Mini instantaneous water heaters suitable for under or over counter mounting
- + Shower kits included (selected models)
- + Intrinsically safe, built in ELCB, anti-scald features (selected models)
- + 50/80/100 L storage heaters can be installed horizontally or vertically

VITOTHERM/VITOWELL



Vitotherm



Vitowell

Compact boilers and full stainless steel gas condensing boilers for commercial & light industrial applications. With advanced controllers to realise complex heating & hot water systems.





The **Vitocrossal** range of stainless steel condensing boilers is a flagship product offering from Viessmann, where innovation meets versatility. With the 100 and 300 series, the Vitocrossal boilers cater to every heating need, from the practical to the premium. Whether for residential complexes, local heating networks, public and commercial buildings or industrial plants, the Vitocrossal boilers deliver energy efficient performance [98% (Hs) / 109 (Hi) % to DIN] along with seamless connectivity options. The Inox-Crossal heat exchanger underpins the superior design of the Vitocrossal boilers.

VITOCROSSAL 100/300

Vitocrossal 100 CIB

Universally applicable gas condensing boiler with an output of 80 to 318 kW as single units. With its very excellent price-performance ratio, it is a particularly economical solution for residential and light commercial applications. A max. installation width of 68 cm and built-in castors make for easy handling & installation in confined plant rooms.

FEATURES AND BENEFITS VITOCROSSAL 100 CIB

- + Integrated matrix cylinder burner with 1:5 modulation suitable for NG E & LL, H₂ ready for up to 20%
- + Clean combustion due to low combustion chamber loading
- + Compact dimensions, castor wheels provided for easy handling
- + Twin boiler configuration up to 640 kW in one case using standard accessories. Cascade configuration up to 1280 kW



Vitocrossal 100 CIB

Vitocrossal 300 CIB

Next gen evolution of gas condensing boilers with an output of 80 to 640 kW as single units, focussed on high performance and space efficiency. The unique stacked heat exchanger design results in a max. installation width of just 75 cm and with integrated castors affords easy handling & installation in confined spaces. The Vitocrossal 300 CIB come standard with the new feature rich and interactive One Base connected control platform.

FEATURES AND BENEFITS VITOCROSSAL 300 CIB

- + Integrated matrix cylinder burner with 1:10 modulation, suitable for NG & LPG, H₂ ready for up to 20%
- + Lambda Pro Control - integrated O₂ sensor and automatic gas type adaption
- + 95°C operating / 110°C flow temperature and 6 bar operating pressure
- + Inox-Crossal stainless steel heat exchanger for high operational reliability
- + Up to 8 boilers in cascade
- + All new Vi One Base control platform



Vitocrossal 300 CIB

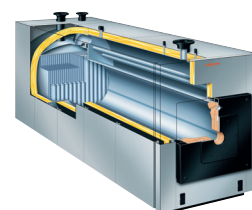
VISSMANN
ONE BASE

Vitocrossal 300 CR3B

Large capacity condensing with an output from 787 to 1400 kW as single units. With its large water volume & second return connection, it is a particularly suited for large commercial and industrial applications, where the requirements are diverse.

FEATURES AND BENEFITS VITOCROSSAL 300 CR3B

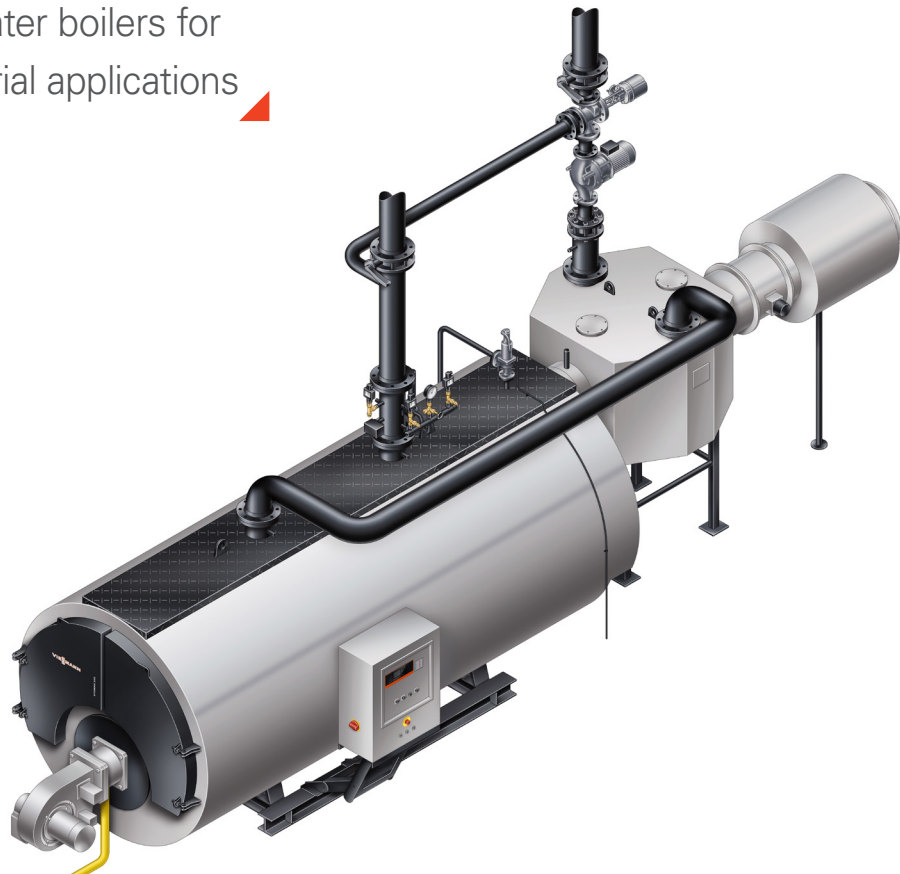
- + External jet burner suitable for natural gas, LPG
- + Clean combustion due to low combustion chamber loading, large water volume
- + Split design for easy handling
- + Two return connectors for hydraulic connection optimised for condensing technology
- + Up to 8 boilers in cascade for a total capacity of up to 11.2 MW



Vitocrossal 300 CR3B



Robust oil/gas/electric
hot water boilers for
industrial applications





Designed using proven and reliable technology, the Vitomax hot water boilers lend themselves to quick deployment, easy start up, low maintenance and long service life. These are therefore ideally suited to meet critical hot water requirements in large commercial installations and industries. The Vitomax boilers are supplied with matched components to deliver optimal performance. Available accessories include flue gas/ water heat exchangers, return temperature raising facilities and flue gas components are further system options.

Purpose designed Vitrotronic controllers or Vitocontrol control panels (if applicable) provide a clear and intuitive operator interface with additional features such as remote monitoring and BMS integration.

Low pressure hot water boilers oil / gas

Vitomax LW: low pressure hot water boiler for permissible flow temperatures of up to 110 °C (120 °C on request), operating pressure of 6, 10 or 16 bar and a heating output ranging from 0.65 to 22 MW.

High pressure hot water boilers oil / gas

Vitomax HW: high pressure hot water boilers for flow temperatures up to 240 °C, operating pressure up to 30 bar and heating output ranging from 2.1 to 20 MW. Above 20 MW in custom designed configurations.

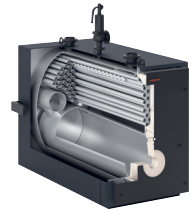
High pressure hot water boilers - waste heat, waste heat hybrid

Vitomax RW/RW-H: high pressure hot water boilers making use of process waste heat, with/without supplementary oil or gas firing. Custom manufactured as per user requirements.

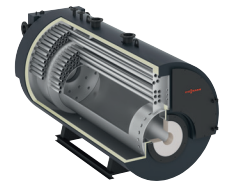
High pressure hot water boilers - electric

Vitomax HW-E: Electricity only operated high pressure hot water boilers from 0.13 to 9.17 MW, operating pressure up to 25 bar. Quick cold start and zero emissions operation.

VITOMAX-LW/HW/RW/HW-E **0.65 to 22 MW**



Vitomax LW M60



Vitomax HW with Eco



Vitomax RW-H with Eco



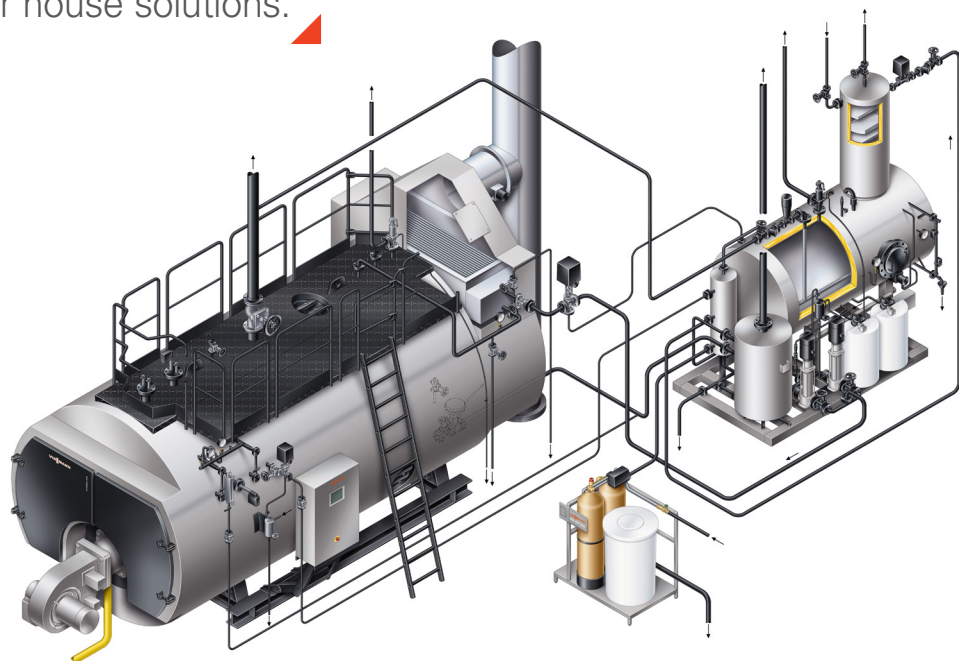
Vitomax HW-E

FEATURES AND BENEFITS

- + No minimum heating water flow rate required – wide water galleries and a large water content provide excellent natural circulation and reliable heat transfer
- + Flexible fuel options - natural gas, bio gas, LPG, LFO, HFO, waste heat & electricity
- + Certification under the Gas Appliances Directive is available for permissible flow temperatures of up to 110 °C, and under the Pressure Equipment Directive for permissible flow temperatures above 110 °C
- + Highly efficient operation. Low radiation losses due to optimum thermal insulation. Increased efficiency by using flue gas/water heat exchangers (on request)
- + Straight forward hydraulic connection and reliable heat transfer ensure a high degree of operational reliability
- + Servicing made easy by number of sight and inspection ports and options such as a water-cooled burner entry point and walk-on boiler cover



High pressure oil/gas steam boilers for demanding commercial and industrial applications, complete boiler house solutions.



Complete boiler house solutions

In addition to manufacturing steam boilers, Viessmann works closely with its customers to provide a complete range of boiler house components and services. Viessmann supplies a wide range of matched equipment for feedwater treatment and energy recovery, as well pumps, burner and other fittings. Viessmann also offers consultation, design, installation, commissioning and maintenance services.



Efficient steam generation

With the Vitomax-HS/HS-E/HS-H/RS high pressure steam boiler, Viessmann meets the requirements for efficient & environmentally friendly steam generation in a wide range of industries such as food & beverages, fertilizers, construction materials, paper, chemicals, pharmaceuticals refineries to name a few.

The ability to use Oil, Gas, Electricity or Waste Heat ensures high operational flexibility and environmentally friendly operation over the entire range.

High pressure steam boilers - oil / gas

Vitomax-HS: high pressure combustion steam boilers ranging from 0.5 to 30 t/h and operating pressure up to 24 bar as standard execution. Suitable for oil (LFO/HFO) and/or gas (Natural/bio/LPG/Hydrogen).

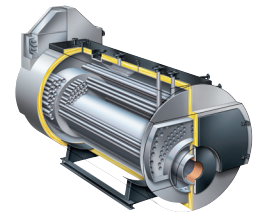
High pressure steam boilers - electric/electric hybrid

Vitomax-HS-E, HS-H: new range of electric/electric hybrid steam boilers with electricity as the primary source. Available up to 10 t/h, the Vitomax HS-E and HS-H boilers will lead the CO₂ neutral transition in industries.

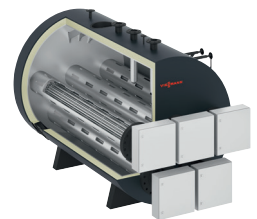
High pressure steam boilers - waste heat/combustion hybrid

Vitomax RS, RS-H: Steam generation using exhaust gases from processes & engines. Custom designed for a max. flue gas volume of 80,000 Nm³.

VITOMAX-HS/HS-E/RS 0.5 to 30 t/h



Vitomax-HS



Vitomax HS-E



Vitomax RS

FEATURES AND BENEFITS

- + Three-pass boiler combustion & waste heat boilers - with and without economiser; electric boilers
- + High grade insulation for very low radiation losses
- + Water cooled burner inlet (optional)
- + Optimised arrangement of connectors on the boiler for quick installation
- + Load bearing boiler cover extendible to a platform for ease of access
- + Greatest flexibility due to customer-specific design
- + Vitocontrol PLC control with HMI and connectivity options for effective boiler management

Clean steam generation

The Vitomax-CS is a packaged unit producing high grade system, which can be practically "dropped-in" in a diverse range of applications in the food processing, pharmaceuticals, veterinary, cosmetics, biotechnology and allied industries.

The Vitomax-CS uses treated feed water and plant steam to produce clean steam. Standard range includes generators up to 4.0 t/h and 3 bar; other configurations are custom manufactured as per requirement.

FEATURES AND BENEFITS

- + Compact modular design in 316 L stainless steel
- + Preassembled and connection ready
- + Precise flowrate and pressure control of clean steam

VITOMAX-CS

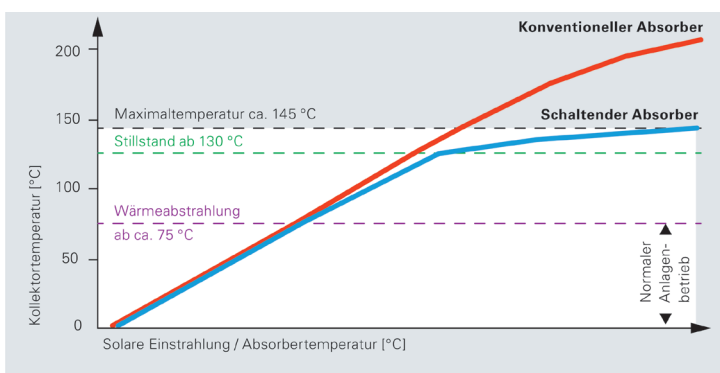
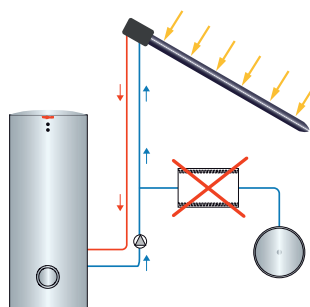




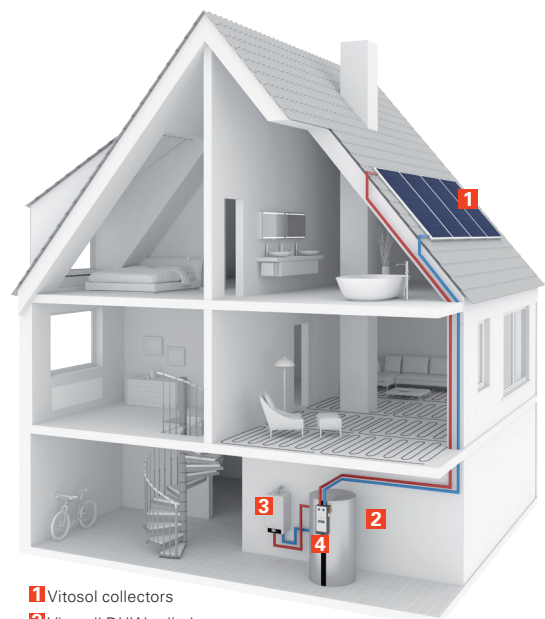
Solar collectors with over heating protection with high degree of installation flexibility. Benefit from high energy savings in hot water production

ThermProtect – Automatic collector shutdown

Vitosol-F flat plate Vitosol-T and vacuum tube collectors from Viessmann use patented Thermprotect® Switching Absorber. Up until the switching temperature more than 95% of the incident solar energy is absorbed. Above the switching temperature, the crystalline structure of the absorber changes to increase the rate of radiation. In case of heat pipes, condensation of the heat transfer fluid stops. The collector output is reduced, as is the stagnation temperature and steam formation is avoided.



Matched system components for highly efficient solar system



- 1 Vitosol collectors
- 2 Vitocell DHW cylinder
- 3 Vitodens back up boiler
- 4 Vitosolic solar controller



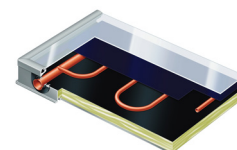
Powerful and durable solar flat-plate collectors with TermProtect

The high performance Vitosol 100 & 200-F flat plate collectors harness the energy of the sun to meet the requirements of domestic hot water (DHW), pool heating and even central heating back up. Available in vertical or horizontal configurations, solar thermal systems with Vitosol collectors and matched components are well suited for domestic, commercial and industrial applications. The Vitosol FM collectors are a "world's first" featuring Viessmann's patented switching absorber coating that prevents system overheating with no to minimal support from any external measures.

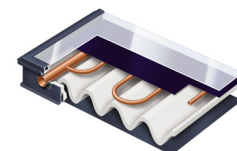
FEATURES AND BENEFITS

- + Highly selective coated absorber
- + Robust construction - permanently sealed all round alu, frame and impact resistant low iron solar glass
- + Meander shaped absorber
- + Universally suitable for flat roof, in roof or facade – horizontal or vertical installation
- + Quick, secure attachment with flexible stainless-steel corrugated-pipe plug-in connectors
- + Thermprotect feature (FM range) avoids system overheating at high outdoor temp. or during periods of low demand

VITOSOL 100/200-F/FM



Vitosol 100-F



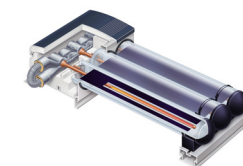
Vitosol 200-F

Heat pipe based highly efficient vacuum tube collectors with TermProtect

In the Vitosol 200 & 300-T, a heat transfer medium evaporates inside the heat pipe below the absorber and transfers the heat to the solar medium via the Duotec twin pipe heat exchanger. The heat pipe is self regulating; the ThermProtect feature prevents stagnation temperature. The absorber and the heat pipe are enclosed in vacuum enabling conversion of even low levels of insolation to useful energy. The Vitosol 200-T tube collector is ideally suited in demanding applications with critical space or aesthetic requirements and offers great installation flexibility.

FEATURES AND BENEFITS

- + Universal application - installation in any location, horizontal or vertical, from 0 to 90 degrees on rooftops, walls or free-standing
- + Sustained high performance without risk of absorber surface contamination
- + Automatic temperature dependent shut-down with Thermprotect avoids system overheating
- + Dry connection – no contact between the process and heat transfer media; tubes can be replaced without system shut down
- + Easy assembly through the Viessmann fixing system and corrugated stainless steel plug-in connectors



Vitosol 200/300-T

Matched components for complete DHW systems

Viessmann supplies various matched components to realise complete domestic water hot water systems. These include electronic controllers, circulation pumps, expansion vessels, storage & buffer tanks and safety equipment. Customers can quickly deploy a complete working system from the components they receive, significantly saving costs and reducing time required to complete the project. For more information on DHW storage and buffer options, see relevant sections of this brochure.

FEATURES AND BENEFITS

- + Vitosolic versatile electronic system controller for complex, multivalent solar DHW systems several pre-programmed hydraulic variants for diverse applications
- + Wear resistant diaphragm expansion vessels for heating & hygienic hot water
- + Vitocell tanks for DHW & heating water, with or without in-built heat exchangers
- + Factory assembled circulation pump units Divicon

VITOSOL SYSTEM COMPONENTS



Expansion vessel,
Vitosolic,
Solar Divicon





Vitocell & Energycell from Viessmann are an extensive range of cylinders for hygienic/domestic hot water (DHW) and heating water buffer storage. The Vitocell & Energycell range consists of storage only cylinders, mono & dual-mode hot water cylinders, combination cylinders and heating water buffer cylinders optimally matched to the solar collectors, boilers and heat pumps from Viessmann for a well-functioning DHW and / or heating plant. Depending on the application and customer requirements, several options are offered such as electric heaters, controllers, inspection manholes, removable heat exchangers, and cathodic protection.

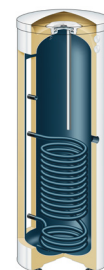
Steel hot water cylinders Energycell 050/Vitocell 100/ Energycell 100

Vitocell 100 / Energycell 050/100 made from steel with nano ceramic resin coating (Energycell 050) or Enamel / Ceraprotect enamel coating (Vitocell 100 / Energycell 100) are a hygienic and economical means of hot water storage for domestic & commercial applications. Viessmann offers one of the widest ranges of resin coated & enamelled storage cylinders for a variety of heat generators, from wall hang boiler and solar collectors to large boilers and heat pumps.

FEATURES AND BENEFITS VITOCCELL 100

- + High quality S235JR + N / P265GH steel, according to AD 2000, TRB 521 & 522
- + Capacities:
Energycell 050: Storage only from 1000 to 5000 L
Energycell 100/Vitocell 100: Storage only 500 L to 3000 L, with 1 or 2 Hex. coils from 120 L to 2000 L
- + Enamelling as per DIN 4753 part 3
- + Working pressure from 6 to 10 bar for cylinders and from 10 to 25 bar for coils
- + Moulded PU foam or removable fleece insulation depending on capacity, with polystyrene cladding. Other cladding options available on request

VITOCCELL 100 120 to 3000 lts



Vitocell 100- V

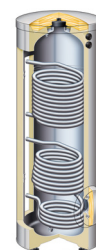
Stainless steel hot water cylinders Vitocell 300/Energycell 300

Vitocell 300 /Energycell 300 DHW cylinders, made from corrosion-resistant stainless steel that meet the most stringent hygiene standards. These cylinders therefore find use in critical applications in kitchens, laboratories, hospitals and food processing industries.

FEATURES AND BENEFITS VITOCCELL 300

- + AISI 316 L stainless steel storage tanks, according to AD 2000 and PED
- + Up to 5000 L as standard for storage, up to 2000 L as standard for 1 or 2 Hex. coils. Other capacities up to 15000 L on request
- + Working pressure up to 20 bar for cylinders and up to 25 bar for coils
- + Maximum working temperatures 95 °C for tank and 120 °C for coils. (200 °C with special seals)
- + Moulded PU foam or removable fleece insulation depending on capacity, with polystyrene cladding. Other cladding options on request.

VITOCCELL 300 Up to 15000 lts



Vitocell 300-B

Heating water buffer cylinders

Viessmann offers a diverse range of heating water buffer tanks under the Vitocell series. The buffer tanks store thermal energy temporarily that can then be used for central heating or DHW production. The Vitocell buffer tanks are available in various configurations, as storage only, with coil heat exchangers for multivalent heating systems and with coil for instantaneous DHW production

FEATURES AND BENEFITS VITOCCELL BUFFER

- + Buffer tanks up to 2000 L in high grade steel for use in mono- or multivalent heating systems. Larger capacities on request
- + Working pressure up to 3 bar for cylinder and 10 bar for coils. Heating water temp. up to 110°C
- + Removable fleece insulation with polystyrene cladding

VITOCCELL BUFFER Up to 2000 lts



Vitocell 140-E



► Innovative concepts for heating water storage and DHW generation





Innovative concept for heating water

The **THERMOCUBE™** is a patented Hot Water Heat Accumulator (buffer tank) system, constructed from interlocking polyurethane foam sandwich panels.

Heating water is stored at atmospheric pressure in the tank in a closed loop. Potable DHW at regulated mains pressure passes through purpose designed 316 L stainless steel heat exchanger coils suspended within the tank. Energy is transferred from the stored body of water to the potable water inside the heat exchanger coils and made available for distribution. The buffer tank size and the number of heat exchanger coils are selected depending on the DHW flow rate required.

Convenient and hygienic instantaneous DHW generation

Vitotrans 353 is a range of fully assembled plate exchanger units for instantaneous production of domestic hot water (DHW). With Vitotrans 353 DHW is produced on demand using heating water from a buffer tank, without the need to store the entire volume. The buffer tank is heated by diverse heat generators using renewable energy and electricity, or then oil / gas. The Vitotrans 353 maintains a constant outlet temperature for different draw off profiles. An in-built frequency controller regulates the speed of the circulation pump such that the volume flow is exactly set for the required draw off rate.

FEATURES AND BENEFITS

- + Versatile application in heating systems with several heat sources and several consumers
- + Supplied in kit form, easy to transport and handle. Quick on-site assembly without needing special tools
- + High grade 316 L coil HeX for DHW
- + All round high grade insulation, suitable for indoor or outdoor installation
- + No risk of legionella

THERMOCUBE™ From 3500 L



THERMOCUBE™

FEATURES AND BENEFITS

- + Completely assembled module with brazed PHE, controller and primary circulation pump
- + Easy integration into an existing heating plant thanks to compact form factor
- + Long life stainless steel PHE, copper or stainless steel soldered
- + Can be installed directly on buffer tank (some versions) or on wall
- + Cascade of up to 4, no additional controller necessary
- + No risk of legionella

VITOTRANS 353 25/48/68 l/min



Vitotrans 353

Energy & space efficient air-water and water-water heat pumps for DHW and space heating & cooling.





Air-Water & Water-Water Heat pumps for commercial applications

The Energycal PRO series is a range of high efficiency, mono block air to water (A-W) & water to water (W-W) heat pumps ideally suited for professional heating and DHW applications. The A-W units are primarily designed for outdoor application and both the A-W and W-W units are rated at Energy Class A+ or higher. The Energycal PRO heat pumps are reversible on the refrigeration side with combined with domestic hot water production if the project requires it. Machines capable of total recovery for the simultaneous production of hot and chilled water are also available. The product range is diverse with several options for refrigerants and compressors, some of these are: Refrigerant: R410-A, R513-A, R290, R744-CO2 Compressors: Scroll, EVI with liquid injection, Semi-Hermetic.

FEATURES AND BENEFITS

- + Wide capacity range; Heating from 7.0 to 250 kW
- + Cooling capacity from 6.0 to 222 kW
- + Heating only heat pumps available up to 500 kW as single units
- + COP up to 4.3 (A7/W35) and 5.45 (W10/W35)
- + Flow temperatures up to 80 °C
- + A-W heat pumps available capable of working in high ambient temperature environments
- + Available in SLN super-silent versions, with total heat recovery DWS series and with variable speed inverter control for compressors
- + Connect up to 6 units in cascade
- + Simultaneous production heating/cooling and DHW
- + Wide range of matched hydraulic, electric and connectivity accessories
- + Customization possibility to meet specific project requirements
- + 60 Hz versions available

ENERGYCAL PRO 7 to 250 kW



Energycal AWH
PRO MT



Energycal WW
PRO MT

Modular Air-Water Heat- ing only Heat pumps for residential & commercial applications

The SIRAC LSQ is a unique modular concept heating only air-water heat pump, available in 20, 30 and 45 kW capacities. Multiple LSQ heat pumps can be mounted hard-up against each other, reducing space requirements and creating a seamless multi-circuit cascaded heat pump system. The cascade can consist of heat pumps of different capacities. The LSQ heat pumps run extremely quiet and are able to operate in a wide range of ambient conditions.

FEATURES AND BENEFITS

- + Single compressor & one refrigeration circuit per heat pump
- + In built circulation pump
- + Flow temperature up to 75 °C
- + Highly efficient shell & tube heat exchanger
- + Variable speed DC fan motor as standard
- + Up to 16 units can be controlled by one controller
- + Integrated MODBus interface
- + 60 Hz versions available

SIRAC LSQ 20/30/45 kW



SIRAC LSQ



Air-Water Heat pumps for swimming pools

Enjoy your swimming pool and spa all year round with the SIRAC SW reversible Air to Water heat pumps. The SIRAC SW heat pumps are supplied with Titanium heat exchangers that are virtually impervious to chlorine, hydrochloric acid, salt and other chemicals while reliably heating the water to as high as 40 °C. The large bore full flow connections on the heat exchangers also allow for light undissolved solids and waste matter to flow through the heat exchanger without fouling. Extremely quiet operation allows the SIRAC SW heat pumps to be mounted close to the swimming pool or spa, thereby reducing pipe runs.

FEATURES AND BENEFITS

- + Wide capacity range: Heating up to 220 kW at 15 °C ambient; Cooling up to 145 kW at 43 °C ambient
- + Inverter compressor with R32 up to 101 kW heating, standard compressor with R410A up to 220 kW heating
- + Long life Titanium heat exchanger, resistant to fouling
- + Inverter fan for added efficiency and super low noise (selected models)
- + Weatherproof ABS and Galvanised epoxy coated enclosures + WIFI connectivity for remote control

SIRAC SW 7 to 250 kW



SIRAC SW TA1

Air to water Heat pumps for domestic hot water

The Vitocal DHW storage heat pump from Viessmann is a highly effective, energy efficient, drop-in heat pump solution with integral tank for the preparation of domestic hot water. The DHW heat pumps are available in different capacities to meet diverse installation and hot water requirements. The unit is fully wired with practical pipe connections and therefore can be installed in the utility room or a cellar.

FEATURES AND BENEFITS

- + DHW heat pump for recirculation (inside air) or extract (outside air) modes
- + Available in 178 L and 254 L capacities without and 251 L with internal coil heat exchanger
- + Low GWP 1234 ze refrigerant
- + Back up electric heaters supplied as standard in 178 L and 254 L capacities
- + Smart grip ready - provision to directly connect to solar PV panels + Automatic anti-legionella protection
- + Inlet temperature range from -5 to 35 °C; Nom. DHW temperature 62 °C

VITOCAL 060-A 178 to 254 L



Vitocal 060-A

VISSMANN MIDDLE EAST SERVICE PLUS
REPAIRS
MAINTENANCE
TECHNICAL AUDITS



**Professional service for
Professional Equipment**

Reliable and uninterrupted operation of your plant room requires qualified operators and service. This ensures that your heating equipment runs optimally, efficiently and safely at all times under all demand conditions. Moreover, scheduled service cuts down operational uncertainties to a minimum.

Viessmann Service Plus

Service Plus is a comprehensive training, maintenance and plant improvement package from Viessmann. Our specialist engineers draw on experience gained over 100 years to offer a full spectrum of services, from maintenance contracts to complex full plant audits, and tailored to individual customer requirements. Consistent with Viessmann principles, all our contracts are transparent and time bound leading always to a satisfactory customer experience.



TAKE ADVANTAGE OF THESE BENEFITS

- + Services for Viessmann heat generators and accessories
- + Breakdown call outs and emergency requests
- + Spare parts and tailored maintenance contracts
- + Operator training
- + Technical audits, recommendations for efficiency improvement and equipment upgrade
- + Templates for record keeping - check-lists, log books, etc.

Call us for a discussion and a non-binding service offer on
+971 (4) 372 42 40 or write to us at service-me@viessmann.com

Future proof technologies for all applications

Viessmann offers perfectly matching system solutions for heating & DHW for residential, commercial and industrial applications. Solutions from Viessmann help reduce costs, conserve the environment while at the same time ensure high uptime and operational reliability. Viessmann Middle East has since 2007 to its credit several completed and operational projects in the region covering the entire Viessmann product range.





Viessmann Middle East FZE
PO BOX 341330
Dubai Silicon Oasis Building
E-Wing Office No. 605
Dubai, United Arab Emirates
Telephone +971 (4) 372 42 40
Email: info-me@viessmann.com
www.viessmann.ae

Your trade partner

AE 06/2024

Copyright Viessmann.
Duplication and alternative use
only with prior written consent.
Subject to modifications.
