



TECHNOLOGY BROCHURE

Product Overview



COMPANY

Viessmann Middle East

Viessmann Middle East FZE with its sales, technical and training team is responsible for operations in the Middle East, Africa and South Asia for the entire range of Viessmann products.



We create living spaces
for generations to come.



VISSMANN GROUP IN FIGURES

1917	—	Viessmann was founded
12,750	—	employees
3.4	—	Group turnover in billion €
22	—	manufacturing locations in
12	—	countries
120	—	sales offices worldwide
74	—	countries with agents and sales companies





TABLE OF CONTENTS



4



8



12



14



22

INSET FRONT

The Viessmann Group

4 VITOPEND/VITODENS

Vitopend, Vitodens – Highly efficient conventional and condensing gas boilers for heating & DHW, suitable for installation in living spaces

6 VITOPLANAR/VITOCAL

Direct electric and heat pump DHW & space heating solutions

8 VITOPLEX/VITOCROSSAL

Low temperature oil/gas boilers in steel, Condensing gas boilers in stainless steel – for commercial and industrial applications

10 VITOMAX

Low and high pressure hot water boilers for industrial applications, complete hot water solutions for industries

12 VITOMAX

Low and High pressure steam boilers for industrial applications, clean steam generators, complete boiler house solutions

14 SOLAR

Powerful solar collectors and matched components for hot water generation

16 STORAGE CYLINDERS

Glass lined & stainless steel storage cylinders, heat pumps with DHW storage

18 HEAT PUMPS

Air/Water, Water/Water heat pumps for residential, commercial & swimming pool heating applications

20 REFRIGERATION SOLUTIONS

Bespoke cold room solutions, high visibility food & beverage display and refrigeration solutions

22 SERVICE

Optimum performance and long operational life of installed Viessmann equipment & solutions

INSET BACK

References, proven credibility in the region

Conventional and condensing wall hung gas boilers. Suitable for installation in living spaces, designed for maximum comfort and efficiency.





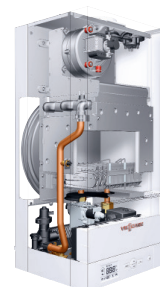
Efficient and affordable gas fired combi/system boiler.

With the Vitopend 100-W, Viessmann offers a wall mounted gas fired boiler with a particularly advantageous price/performance ratio, excellent heating and operating convenience, compact dimensions and a timeless, elegant design. The compact Vitopend 100-W can be fitted practically anywhere, in the kitchen, bathroom, attic, niches and corners, because service clearance is not necessary.

FEATURES AND BENEFITS

- + Central heating/combi boilers for balanced flue operation
- + Standard efficiency: up to 90.5% (Hs) / 94% (Hi)
- + Back lit digital display with push button controls
- + WLAN/Internet enabled (via accessory)
- + OpenTherm compatible
- + High DHW comfort
- + Particularly quiet, even suitable for installation in living spaces

VITOPEND 100-W 12 to 34 kW



Vitopend 100-W

Highly efficient gas condensing combi/system boiler.

The Vitodens range of highly efficient gas fired wall hang boilers are well suited to bring the benefits of condensing technology to homes, apartments all the way to commercial establishments. The Vitodens boilers are underpinned by Viessmann patented Matrix-Plus burners with Lambda Pro combustion control and inox radial stainless steel condensing heat exchangers. This guarantees unparalleled efficiency and fuel savings.

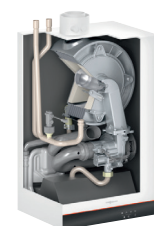
FEATURES AND BENEFITS VITODENS 050/100-W

- + Available as system or DHW combi boilers up to 32 kW for open or balanced flue operation
- + Suitable for natural gas & LPG (automatic gas type adaption). Certified H2 ready
- + Modulation 1:8 for Vitodens 050-W and 1:10 for Vitodens 100-W
- + Same output for heating and hot water
- + Standard seasonal efficiency up to 98% (Hs) / 109% (Hi)
- + All new control platform with black panel touch screen control. Built in WiFi
- + Convenient control of direct (050 & 100-W) or mixed (100-W only) heating circuits
- + Maintenance access from the front, no need for space on the sides
- + DHW and heating control using the ViCare app (Where available)
- + Energy efficiency rating class A

VITODENS 050/100/200-W 3.2 to 150 kW



Vitodens 050-W



Vitodens 100-W



Vitodens 200-W

FEATURES AND BENEFITS VITODENS 200-W

- + System boilers up to 150 kW as single units
- + Suitable for natural gas / LPG (automatic gas type adaption). Certified H2 ready
- + Standard seasonal efficiency up to 98% (Hs) / 109% (Hi)
- + Easy control using the Vitotronic controller with clear text and graphical interface
- + Cascade options with standard accessories to achieve heating output up to 594 kW (up to 900 kW on request)
- + Internet and BMS connectivity (via accessory)
- + Energy efficiency rating class A

Efficient electric boiler, radiant panel, under floor mats and storage heat pumps for living spaces - performance matched with aesthetics.





Electric boiler for DHW and heating

Practical and safe, the Vitotron uses electricity to provide heating and domestic hot water. Installing is easy without the need for a gas connection, chimney, boiler room or fuel store - just plug power in. The automatic controller VNM3 ensures effective heating and DHW production with 99,4% efficiency. The Vitotron can be used as a primary or a back up heat generator. With it's attractive design and size, the Vitotron can be installed practically anywhere, including living spaces.

Electric radiant heating panels and underfloor heating mats

The EI series of radiant heating panels can be used as a sole or complementary source of heat. On offer are flexible installation options and different surface finishes to match living space interiors. Key features are the high radiant effect, two safety temperature limiters, insulated backing, maintenance-free operation and no magnetic field. The EF series of electric heating mats are used where warmth is required quickly, typically where central heating is not required or not feasible. Applications include providing underfloor warmth in bathrooms and kitchens. The mats can be easily installed as a floating substrate for a variety of floor types.

Air to water heat pumps for domestic Hot Water

The Vitocal DHW storage heat pump from Viessmann is a highly effective, energy efficient, drop in heat pump solution with integral tank for the preparation of domestic hot water. The DHW heat pumps are available in different capacities to meet diverse installation and hot water requirements. The unit is fully wired with practical pipe connections and therefore can be installed in the utility room or a cellar.

FEATURES AND BENEFITS VITOTRON

- + Water temperature setting range between 20 and 85 °C
- + Automatic heating output modulation
- + Automatic output adjustment by weather compensated control
- + Daily and weekly heating cycle programming on controller itself

VITOTRON 4 to 24 kW



Vitotron 100

FEATURES AND BENEFITS VITOPLANAR

- + Decentralised heating for bathrooms, kitchens and hallways
- + Quick and straightforward installation
- + Supplied with thermostat and all connection & safety kit
- + EI radiant panels available in glass and mirror finishes. Possibility to customise with own artwork (some models, on request)
- + EF underfloor mats suitable for ceramic, laminate or parquet floors, suitable for open showers

VITOPLANAR 450 to 1275 W



Vitoplanar EI2



Vitoplanar EF2

FEATURES AND BENEFITS

- + DHW heat pump for recirculation (inside air) or extract (outside air) modes
- + Available in 178 L and 254 L capacities without and 251 L with internal coil heat exchanger
- + Low GWP 1234 ze refrigerant
- + Back up electric heaters supplied as standard in 178 L and 254 L capacities
- + Smart grip ready - provision to directly connect to solar PV panels
- + Automatic anti-legionella protection
- + Inlet temperature range from -5 to 35 °C; Nom. DHW temperature 62 °C

VITOCAL



Vitocal 060-A

Compact oil/gas boilers and full stainless steel gas condensing boilers for commercial & light industrial applications. With advanced controllers to realise complex heating & hot water systems.





Low temperature oil/gas steel boilers

The Vitoplex 100/200 range of compact oil/gas boilers are well suited for residential, commercial and even industrial hot water applications. Over the entire output range the boiler offer the right conditions for clean and environmentally responsible combustion. The Vitoplex boilers are designed to work with a wide range of burners. Wide water galleries remove the necessity for minimum hot water return flow temperature. Therm Control feature on certain Vitoplex boilers make the use of shunt pump unnecessary. Feature rich Vitotronic controllers with intuitive colour touch screen interface offer cascade connection and heating circuit control capability, and are internet ready with a built-in LAN interface.

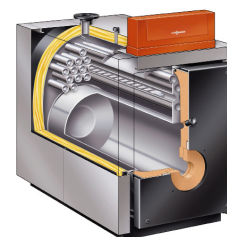
FEATURES AND BENEFITS VITOPLEX 100

- + Two pass boilers with up to 110 °C flow temperature and 5 bar operating pressure
- + Standard seasonal efficiency 88% (Hs) / 94% (Hi)
- + No minimum heating water flow rate required
- + Extendable to a multi boiler system
- + 16 MW capacity in cascade configuration

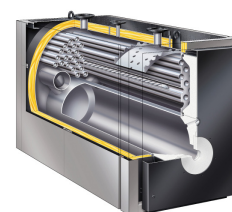
FEATURES AND BENEFITS VITOPLEX 200

- + Three pass boiler with up to 120 °C flow temperature and up to 6 bar operating pressure
- + Low combustion chamber loading leads to clean combustion and low emissions
- + Standard seasonal efficiency Vitoplex 200 - 89% (Hs) / 95% (Hi); Vitoplex 300 - 90%(Hs) / 96% (Hi)
- + Modulating boiler water temperature control
- + Extendable to a multi boiler system
- + Optional stainless steel flue gas/water heat exchanger for higher efficiency
- + 16 MW capacity in cascade configuration

VITOPLEX 100/200 90 to 2000 kW



Vitoplex 100



Vitoplex 200

Condensing stainless steel gas boilers

The Vitocrossal range of stainless steel boilers condensing boilers is a flagship product offering from Viessmann. Vitocrossal boilers are suitable for residential complexes as also for local heating networks, larger public and commercial buildings and industrial plants. The Inox Crossal heat exchanger and the second return connection underpins the superior design of the Vitocrossal boilers. Feature rich Vitotronic controllers with intuitive colour touch screen interface offer cascade connection and heating circuit control capability, and are internet ready with a built-in LAN interface.

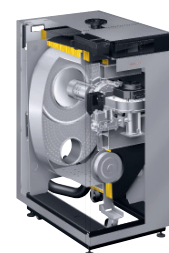
FEATURES AND BENEFITS VITOCROSSAL 100

- + Standard seasonal efficiency [to DIN] up to 98 % (Hs) [gross cv] / 109 % (Hi) [net cv]
- + Integrated matrix cylinder burner suitable for natural gas E & LL
- + Clean combustion due to low combustion chamber loading
- + Compact dimensions, castor wheels provided for easy handling
- + Twin boiler configuration up to 640 kW in one case using standard accessories. Cascade configuration up to 1280 kW

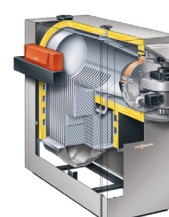
FEATURES AND BENEFITS VITOCROSSAL 200/300

- + Standard seasonal efficiency [to DIN] up to 98 % (Hs) [gross cv] / 109 % (Hi) [net cv]
- + Vitocrossal 200: integrated matrix radiant/cylinder burner suitable for natural gas only/natural gas & LPG. Vitocrossal 300: external burner suitable for natural gas & LPG
- + Clean combustion due to low combustion chamber loading
- + Split design for easy handling
- + Two return connectors for hydraulic connection optimised for condensing technology
- + 11.2 MW capacity in cascade configuration

VITOCROSSAL 100/200/300 80 to 640 kW



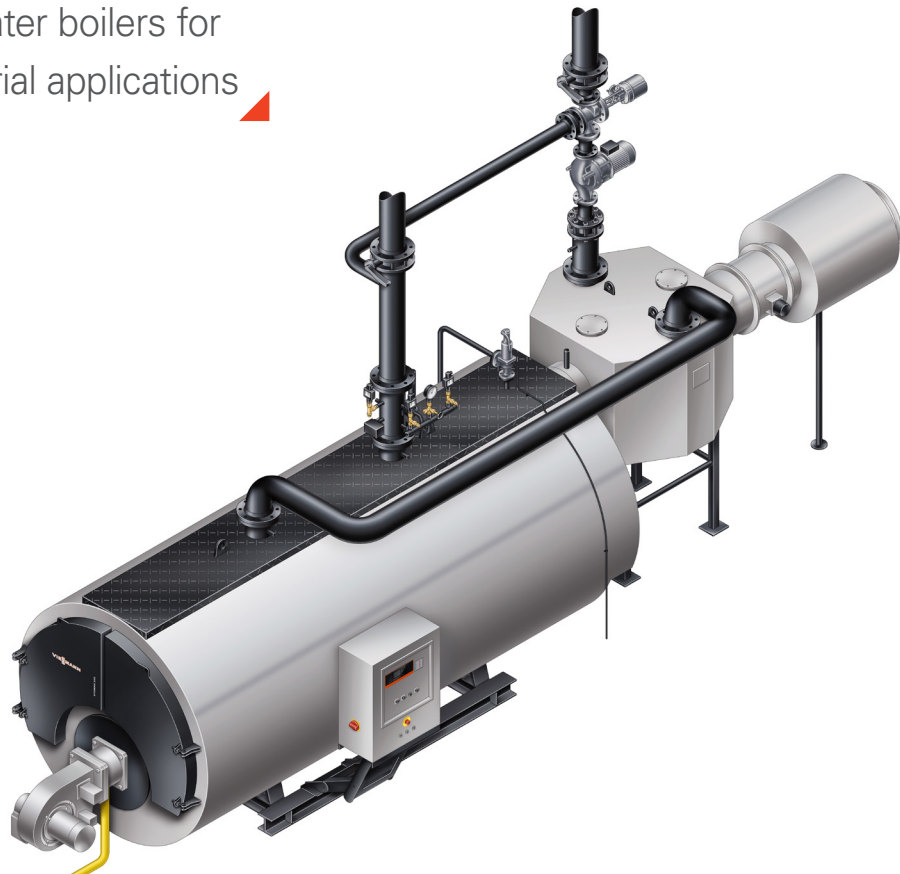
Vitocrossal 100



Vitocrossal 300



Robust oil/gas/electric
hot water boilers for
industrial applications





Designed using proven and reliable technology, the Vitomax hot water boilers lend themselves to quick deployment, easy start up, low maintenance and long service life. These are therefore ideally suited to meet critical hot water requirements in large commercial installations and industries. The Vitomax boilers are supplied with matched components to deliver optimal performance. Available accessories include flue gas/ water heat exchangers, return temperature raising facilities and flue gas components are further system options.

Purpose designed Vitrotronic controllers or Vitocontrol control panels (if applicable) provide a clear and intuitive operator interface with additional features such as remote monitoring and BMS integration.

Low pressure hot water boilers oil / gas

The Vitomax LW is a series of low pressure hot water boiler for flow temperatures of up to 120 °C, operating pressure of 6, 10 or 16 bar and a heating output ranging from 0.65 to 22 MW.

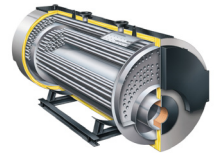
High pressure hot water boilers oil / gas

The Vitomax HW is a series of high pressure hot water boilers for flow temperatures up to 240 °C, operating pressure up to 30 bar and heating output ranging from 2.1 to 20 MW. Above 20 MW up to 120 MW in custom designed configurations.

High pressure hot water boilers - Electric

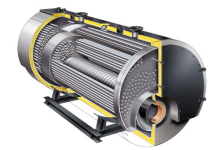
The Vitomax HW-E is a series of high pressure electric hot water boilers for flow temperatures up to 240 °C, operating pressure up to 25 bar and heating output ranging from 0.46 to 4.6 MW.

VITOMAX-LW **0.65 to 22 MW**



Vitomax 200-LW

VITOMAX-HW **2.1 to 20 MW**



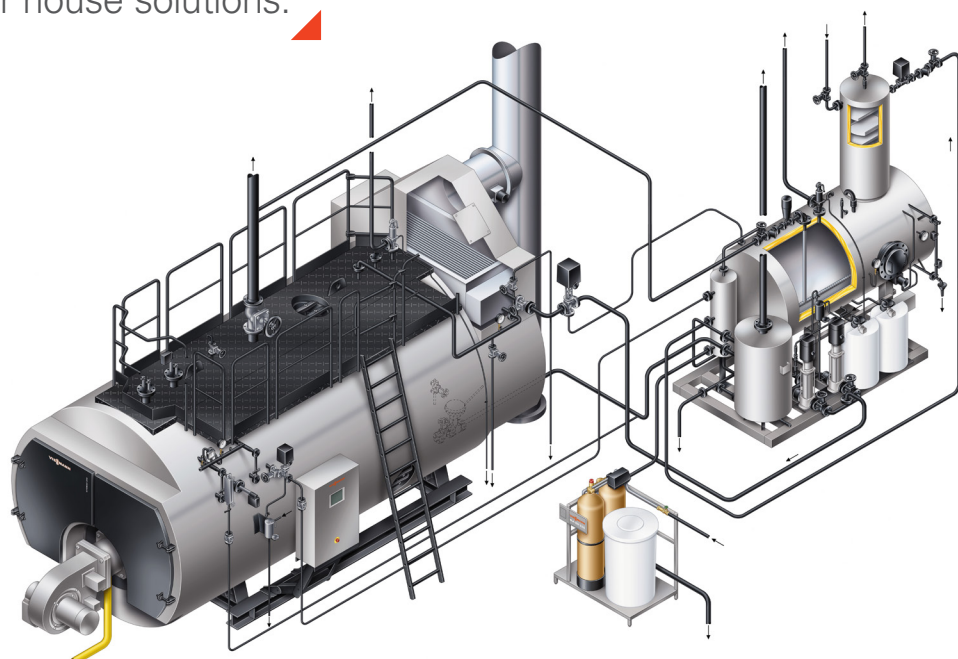
Vitomax 200-HW

FEATURES AND BENEFITS

- + No minimum heating water flow rate required – wide water galleries and a large water content provide excellent natural circulation and reliable heat transfer
- + Low NOx version available on request
- + Certification under the Gas Appliances Directive is available for permissible flow temperatures of up to 110 °C, and under the Pressure Equipment Directive for permissible flow temperatures above 110 °C
- + Flexible fuel options – natural gas, bio gas, LPG, LFO, HFO and Electricity
- + Straight forward hydraulic connection and reliable heat transfer ensure a high degree of operational reliability
- + Highly efficient operation. Low radiation losses due to optimum thermal insulation. Increased efficiency by using flue gas/water heat exchanger
- + Servicing made easy by number of sight and inspection ports and options such as a water-cooled burner entry point and walk-on boiler cover



High pressure oil/gas steam boilers for demanding commercial and industrial applications, complete boiler house solutions.



Complete boiler house solutions

In addition to manufacturing steam boilers, Viessmann works closely with its customers to provide a complete range of boiler house components and services. Viessmann supplies a wide range of matched equipment for feedwater treatment and energy recovery, as well pumps, burner and other fittings. Viessmann also offers consultation, design, installation, commissioning and maintenance services.



Efficient steam generation

With the Vitomax-HS/Hs-E/HS-H/RS high pressure steam boiler, Viessmann meets the requirements for efficient & environmentally friendly steam generation in a wide range of industries such as food & beverages, fertilizers, construction materials, paper, chemicals, pharmaceuticals refineries to name a few.

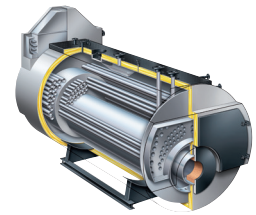
The ability to use Oil, Gas, Electricity or Waste Heat ensures high operational flexibility and environmentally friendly operation over the entire range.

The Vitomax-HS high pressure combustion steam boilers are available with an output range from 0.5 to 30 t/h in single furnace design as standard execution and in double furnace design for larger outputs in special execution; with a permissible operating pressure from 4 to 130 bar depending on the output. The Vitomax-HS boilers can fire oil (LFO/HFO) and/or gas (Natural/bio/LPG/Hydrogen).

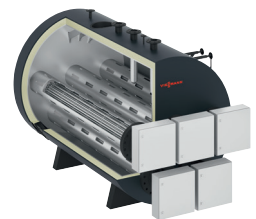
The Vitomax HS-E and HS-H is a new range of electric/electric hybrid steam boilers when electricity is the primary source of energy. Available in output capacities up to 5 t/h, the Vitomax HS-E and HS-H boilers will lead the CO₂ neutral transition in industries.

The Vitomax RS Waste heat boilers use exhaust gases from combustion processes or hot exhaust air streams to from industrial processes to generate steam. Waste heat boilers are custom designed for a max. flue gas volume of 80,000 Nm³ and temperature of 600 °C. If required, Vitomax RS boilers can also be supplied with combustion.

VITOMAX-HS/RS 0.5 to 120 t/h



Vitomax-HS



Vitomax HS-E



Vitomax RS

FEATURES AND BENEFITS

- + Three-pass boiler combustion & waste heat boilers - with and without economiser; electric boilers
- + High grade insulation for very low radiation losses
- + Water cooled burner inlet (optional)
- + Optimised arrangement of connectors on the boiler for quick installation
- + Load bearing boiler cover extendible to a platform for ease of access
- + Greatest flexibility due to customer-specific design
- + Vitocontrol PLC control with HMI and connectivity options for effective boiler management

Clean steam generation

The Vitomax-CS is a packaged unit producing high grade system, which can be practically "dropped-in" in a diverse range of applications in the food processing, pharmaceuticals, veterinary, cosmetics, biotechnology and allied industries.

The Vitomax-CS uses treated feed-water and plant steam to produce clean steam. Standard range includes generators up to 4.0 t/h and 3 bar; other configurations are custom manufactured as per requirement.

FEATURES AND BENEFITS

- + Compact modular design in 316 L stainless steel
- + Preassembled and connection ready
- + Precise flowrate and pressure control of clean steam

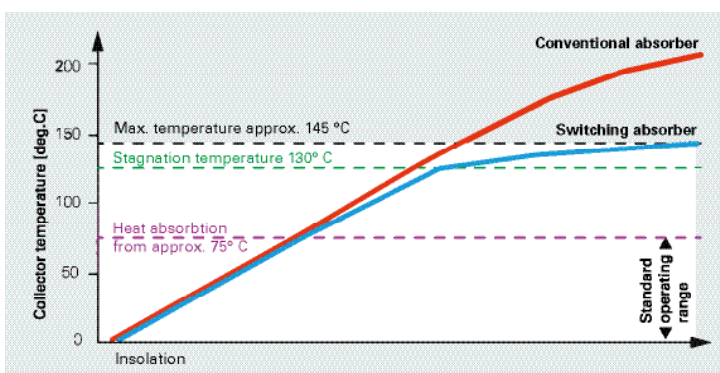
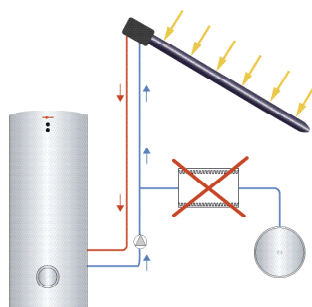
VITOMAX-CS



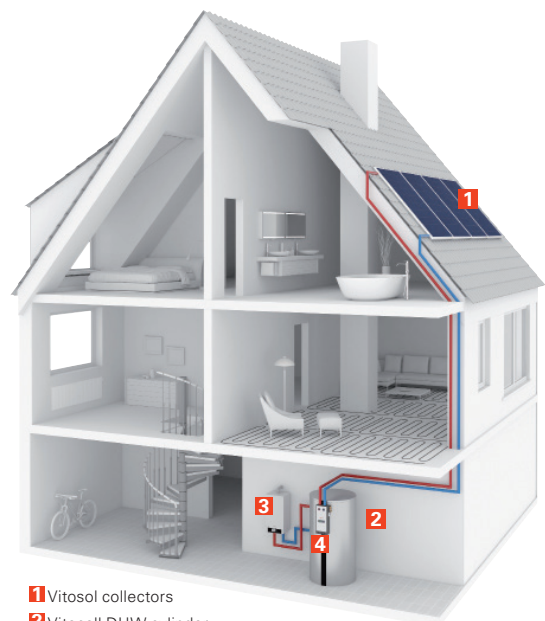


ThermProtect – Automatic collector shutdown

Vitosol-F flat plate Vitosol-T and vacuum tube collectors from Viessmann use patented Thermprotect® Switching Absorber. Up until the switching temperature more than 95% of the incident solar energy is absorbed. Above the switching temperature, the crystalline structure of the absorber changes to increase the rate of radiation. In case of heat pipes, condensation of the heat transfer fluid stops. The collector output is reduced, as is the stagnation temperature and steam formation is avoided.



Matched system components for highly efficient solar system



- 1 Vitosol collectors
- 2 Vitocell DHW cylinder
- 3 Vitodens back up boiler
- 4 Vitosolic solar controller



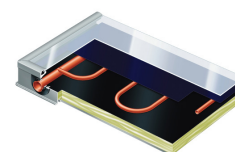
Powerful and durable solar flat-plate collectors with TermProtect

The high performance Vitosol 100 & 200-F flat plate collectors harness the energy of the sun to meet the requirements of domestic hot water (DHW), pool heating and even central heating back up. Available in vertical or horizontal configurations, solar thermal systems with Vitosol collectors and matched components are well suited for domestic, commercial and industrial applications. The Vitosol FM collectors are a "world's first" featuring Viessmann's patented switching absorber coating that prevents system overheating with no to minimal support from any external measures.

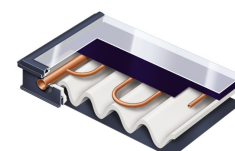
FEATURES AND BENEFITS

- + Highly selective coated absorber
- + Robust construction - permanently sealed all round alu, frame and impact resistant low iron solar glass
- + Meander shaped absorber
- + Universally suitable for flat roof, in roof or facade – horizontal or vertical installation
- + Quick, secure attachment with flexible stainless-steel corrugated-pipe plug-in connectors
- + Thermprotect feature (FM range) avoids system overheating at high outdoor temp. or during periods of low demand

VITOSOL 100/200-F/FM



Vitosol 100-F



Vitosol 200-F

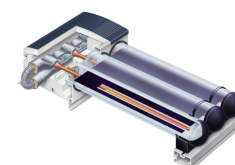
Heat pipe based highly efficient vacuum tube collectors with TermProtect

In the Vitosol 200 & 300-T, a heat transfer medium evaporates inside the heat pipe below the absorber and transfers the heat to the solar medium via the Duotec twin pipe heat exchanger. The heat pipe is self regulating; the ThermProtect feature prevents stagnation temperature. The absorber and the heat pipe are enclosed in vacuum enabling conversion of even low levels of insolation to useful energy. The Vitosol 200-T tube collector is ideally suited in demanding applications with critical space or aesthetic requirements and offers great installation flexibility.

FEATURES AND BENEFITS

- + Universal application - installation in any location, horizontal or vertical, from 0 to 90 degrees on rooftops, walls or free-standing
- + Sustained high performance without risk of absorber surface contamination
- + Automatic temperature dependent shut-down with Thermprotect avoids system overheating
- + Dry connection – no contact between the process and heat transfer media; tubes can be replaced without system shut down
- + Easy assembly through the Viessmann fixing system and corrugated stainless steel plug-in connectors

VITOSOL 200/300-TM



Vitosol 200/300-T

Thermosiphon solar water heating system

The Vitosol 111-F TS1 is a thermosiphon solar thermal system with flat-plate collectors and an enamelled steel DHW cylinder for domestic hot water heating available in 150, 200 and 300 L capacities. The solar and the DHW circuits are completely separate in the double jacketed cylinder. A selectively coated harp shaped hydraulics collector is connected to the cylinder via pre-insulated lines. The complete system is supplied as a package with all required safety equipment for quick and easy installation.

FEATURES AND BENEFITS

- + DHW cylinder with Ceraprotect enamel coated DHW cylinder with low heat loss rigid PU insulation
- + Pre-assembled components make installation very easy; no additional components required
- + Can be installed on flat or pitched roofs
- + High hot water availability achieved through unique tank design that prevents mixing of hot and cold water
- + Provision for back up heater

VITOSOL 111-F



Vitosol 111-F





Vitocell from Viessmann is an extensive range of cylinders for hygienic/domestic hot water (DHW) and heating water buffer storage. The Vitocell range consists of mono & dual-mode hot water cylinders, combination cylinders and heating water buffer cylinders and provides the right hot water storage cylinder for every application and is ideally matched to the solar collectors, boilers and heat pumps from Viessmann. The Vitocell cylinders can be fitted with electric heaters and deployed as electric storage calorifiers independent of solar collectors or boilers. Depending on application and customer requirement, several options are offered for the Vitocell such as inspection manholes, removable heat exchangers, electrical heaters, controllers and cathodic protection.

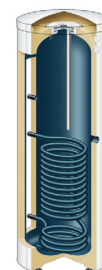
Steel hot water cylinders Vitocell 100

Made from steel with food grade Ceraprotect enamel coating, the Vitocell 100 series of tanks are a convenient and economical means of hot water storage for both, domestic and commercial hot water applications. Viessmann offers one of the widest ranges of enamelled storage tanks in the market, from small tanks for wall hang boilers to large tanks for solar.

FEATURES AND BENEFITS VITOCCELL 100

- + High quality S235JR + N / P265GH steel, designed and tested according to AD 2000, TRB 521 & 522. Enameling as per DIN 4753 part 3
- + Capacities from 120 to 3000 L, without and with built in 1 or 2 coil heat exchangers (up to 2000 L)
- + Working pressure up to 10 bar for cylinders and 25 bar for coils

VITOCCELL 100 120 to 3000 lts



Vitocell 100-V

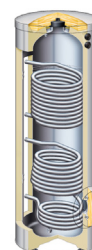
Stainless steel hot water cylinders Vitocell 300

Vitocell 300 DHW cylinders, made from corrosion-resistant stainless steel that meets the most stringent hygiene standards. The Vitocell 300 range of cylinders therefore find use in critical applications in kitchens, laboratories, hospitals and food processing industries.

FEATURES AND BENEFITS VITOCCELL 300

- + AISI 316 L stainless steel storage tanks, designed and tested according to AD 2000 and PED
- + Capacities from 160 to 10,000 litres
- + 5000 L as standard, up to 15000 L on request
- + Working pressure up to 20 bar for cylinders and up to 25 bar for coils
- + Maximum working temperatures 95 °C for tank and 120 °C for coils. (200 °C with special seals)
- + PU foam or fleece insulation depending on capacity
- + Padded PV external lining as standard. Other materials on request

VITOCCELL 300



Vitocell 300-B

Convenient and hygienic instantaneous DHW generation

Vitotrans 353 is a range of fully assembled plate exchanger units for instantaneous production of domestic hot water. Unlike conventional systems where the entire stored volume of DHW is heated, with Vitotrans 353 DHW is produced on demand using heating water from a buffer tank, which in turn can be heated using a range of different systems - oil, gas, solar, heat pumps, electric etc. The Vitotrans 353 can maintain a constant outlet temperature for different draw off profiles. An in-built frequency controller regulates the speed of the circulation pump such that the volume flow is exactly set for the required draw off rate.

FEATURES AND BENEFITS VITOTRANS

- + Completely assembled module with brazed PHE, controller, primary circulation pump and controller
- + Easy integration into an existing heating system thanks to compact form factor
- + Long life stainless steel PHE, copper or stainless steel soldered
- + Can be installed directly on buffer tank (some versions) or on wall
- + Cascade of up to 4 units possible, no additional controller necessary

VITOTRANS 353 25/48/68 l/min



Vitotrans 353

Energy efficient air-water and water-water heat pumps for space heating, DHW and swimming pool heating & cooling.





Air-Water & Water-Water Heat pumps for commercial applications

The Energycal PRO series is a range of high efficiency, mono block air to water (A-W) & water to water (W-W) heat pumps ideally suited for professional heating and DHW applications. The A-W units are primarily designed for outdoor application and both the A-W and W-W units are rated at Energy Class A+ or higher. The Energycal PRO heat pumps are reversible on the refrigeration side with combined with domestic hot water production if the project requires it. Machines capable of total recovery for the simultaneous production of hot and chilled water are also available. The product range is diverse with several options for refrigerants and compressors, some of these are: Refrigerant: R410-A, R513-A, R290, R744-CO2 Compressors: Scroll, EVI with liquid injection, Semi-Hermetic.

FEATURES AND BENEFITS

- + Wide capacity range; Heating from 7.0 to 250 kW
- + Cooling capacity from 6.0 to 222 kW
- + COP up to 4.3 (A7/W35) and 5.45 (W10/W35)
- + Flow temperatures up to 80 °C
- + A-W heat pumps available capable of working in high ambient temperature environments
- + Available in SLN super-silent versions, with total heat recovery DWS series and with variable speed inverter control for compressors
- + Provision to connect up to 6 units in cascade
- + Simultaneous production heating/cooling and DHW possible
- + Wide range of matched hydraulic, electric and connectivity accessories
- + Customization possibility to meet specific project requirements

ENERGYCAL PRO 7 to 250 kW



Energycal AWH
PRO MT



Energycal WW
PRO MT

Air-Water Heat pumps for swimming pools

Enjoy your swimming pool and spa all year round with the affordable, reliable and efficient Energycal SW reversible Air to Water heat pumps.

The Energycal SW heat pumps are supplied with Titanium heat exchangers that are virtually impervious to chlorine, hydrochloric acid, salt and other chemicals while reliably heating the water to as high as 40 °C. The large bore full flow connections on the heat exchangers also allow for light undissolved solids and waste matter to flow through the heat exchanger without fouling. This makes the heat pumps ideally suited to swimming pool, spa and aquaculture applications.

FEATURES AND BENEFITS

- + Wide capacity range: Heating up to 101 kW at 40 °C ambient; Cooling up to 100 kW at 15 °C ambient
- + Refrigerant R32
- + Long life Titanium heat exchanger, resistant to fouling
- + Inverter compressor for high efficiency
- + Inverter fan for added efficiency and super low noise (selected models)
- + Weatherproof ABS and Galvanised epoxy coated enclosures
- + WIFI connectivity for remote control

ENERGYCAL SW 7.6 to 136 kW



Energycal SW TA1



Bespoke cold room for diverse applications.
Innovative and aesthetic food storage and display
products for retail and gastronomy.



VISSMANN Group

VITeC - Viessmann Technologies

VITEC is the specialist division at Viessmann that delivers high end, critical solutions for cleanrooms for healthcare, life sciences and industry. For Hospitals, VITEC helps design the entire concept and supplies complete solutions for facilities such as operating theaters that typically include system walls, ceiling systems, door systems, air supply and re-circ systems, ambient & surface lighting, medical monitors and scrub stations. VITEC offers customized individual GMP compliant clean room solutions ideally suited for applications industries such as electronics, optics, nano technology, cosmetics and pharmaceuticals. The product range includes all functional elements such as floors, walls, lighting, door & locking systems, flow modules and also specialist modules for explosion & radiation protection.

Cold Rooms / Freezer Rooms

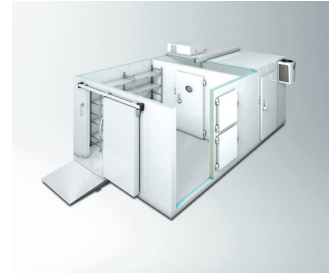
Viessmann manufactures bespoke cold rooms and freezer rooms using 80 to 150 mm thick insulated panels.

Tailored to meet the highest standards, the cold rooms are particularly robust, with superlative hygiene properties and a high level of user convenience. Thanks to the range of customizable options, the Viessmann cold and freezer rooms are suitable for a wide range of applications in areas such as gastronomy, food processing, health care, forensics, horticulture, agriculture and industry.

FEATURES AND BENEFITS

- + Made to measure panels in 80-150 mm thickness with rigid PUF insulation
- + Temperature range -50 to +60 °C
- + Long lasting, hygienic anti microbial coating SmartProtec® inhibits transfer of bacteria
- + Precision fit quick assembly system with camlocks. Silicon free joints
- + Matched system components – doors, windows, hatches, shelving, refrigeration units, controllers
- + Flexible solutions for diverse applications
- + Low per consumption and long service life.

COLD ROOMS/ FREEZER ROOMS



Retail refrigeration solutions

Viessmann offers innovative refrigeration solutions for food and beverage retail with its range of multi-deck cabinets, freezer & chiller islands, glass door & combi freezers, serve over counters, beverage coolers and impulse cabinets. The in store range of refrigeration products create an enjoyable shopping experience and can be customized to suit any store concepts. A strong partner network ensures prompt service and high equipment uptime.

FEATURES AND BENEFITS

- + Wide range of products of every display and storage application
- + Available in remote and plug in configurations
- + Energy efficient operation therefore low operating and maintenance costs
- + Optimised floor space usage
- + Superior aesthetics add to the appeal of the retail space
- + Configurable options for exterior finish, lighting and access



REFRIGERATION

Medical and pathology solutions

Viessmann manufactures Pathology Modules for hospitals that provide indispensable service in the areas of research and forensic medicine. Perfect fitting elements, neutral stainless surfaces and corner radii means that the modules conform to the highest hygiene standards. Modular construction makes the modules scalable; the delivery programme ranges from single cooling modules to combination modules with over 80 spaces.

FEATURES AND BENEFITS

- + Gapless TECTO® elements and fully hygienic wall & floor radii
- + Large doors and heavy duty trays
- + Pass through access, e.g. for use in pathology and university labs
- + Easy to clean and maintain
- + Full spectrum of accessories such as examination tables, shelving systems and transportation carts

MEDICAL APPLICATIONS





Professional service for Professional Equipment

The reliable and uninterrupted operation of your plant room depends on regular service your equipment and qualification of your operators. Experienced and qualified operators ensure that your heating equipment is run optimally, safely and efficiently at all times under all demand conditions. Coupled with scheduled service, this ensures equipment downtime and therefore operational uncertainties are cut down to the minimum.

Viessmann Service Plus

Take advantage of branded service from the manufacturer. Service Plus is a comprehensive training, maintenance and plant improvement package from Viessmann, a veritable one stop shop for improved plant performance and longevity. Our specialist engineers draw on our experience gained over 100 years to offer a full spectrum of services, from simple maintenance contracts to complex full plant audits.

Customers have the flexibility to tailor short or long term service packages based on their individual requirements or then to contract with us for a specific service.

In keeping with Viessmann principles, all our contracts are transparent and timebound leading always to a satisfactory customer experience.

Ensure optimum performance
and long service life of installed
VISSMANN equipment



TAKE ADVANTAGE OF THESE BENEFITS

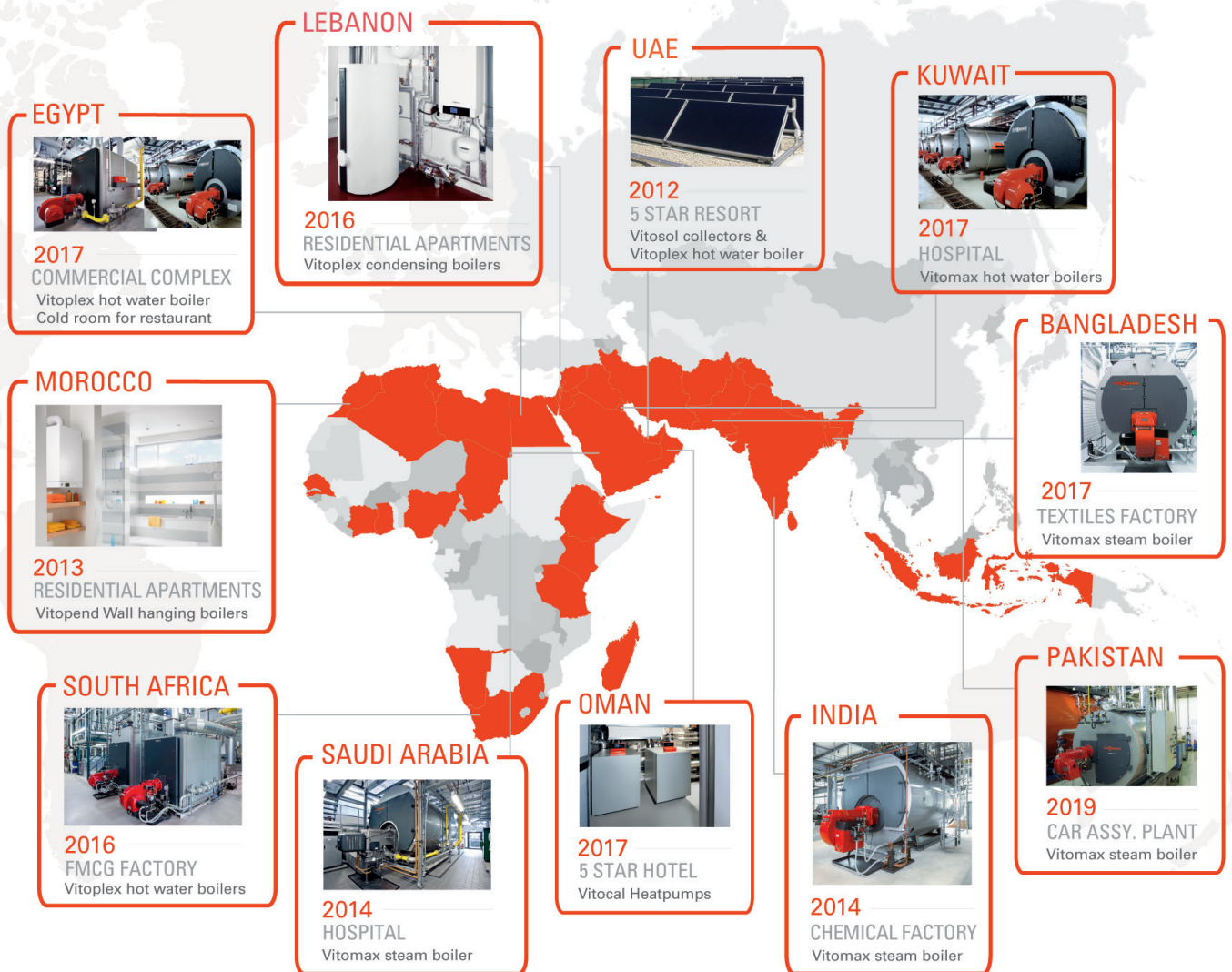
- + Services for Viessmann boilers, heat pumps, solar systems, accessories, other heat generators and cooling systems
- + Response to breakdown call outs or emergency requests
- + Customized maintenance contracts
- + Technical audit of installed equipment
- + Training of equipment operators
- + Spare parts
- + Guidelines on maintenance strategies
- + Templates for record keeping – checklists, log books, etc.
- + Recommendations and solutions for modernization and efficiency improvement

If you are already a Viessmann equipment owner or operator call us for a discussion and a non-binding offer on +971 4 3724240 or write to us at service-me@viessmann.com

Future proof heating and refrigeration technologies for all applications

Viessmann offers perfectly matching system solutions for heating and refrigeration for residential, commercial and industrial applications. By focusing on the efficient use of energy, solutions offered by Viessmann help reduce costs, conserve the environment while at the same time ensure high uptime and operational reliability. So as to ensure everything works together perfectly to achieve maximum efficiency, all system components are assembled according to individual requirements. Viessmann Middle East has since 2007 to its credit several completed and operational projects in the region covering the entire Viessmann product range.

Viessmann references throughout the Middle East, Africa and South Asia



+ Hotels

Solar hot water systems and gas boilers for DHW and laundry;
Cold rooms for catering and food service

+ Hospitals

Solar hot water systems and gas boilers for DHW, clean steam applications; Cold rooms for medicines, pathology and food service

+ Residential Apartments

Solar hot water systems and wall mounted boilers for DHW and heating

+ Leisure and fitness centres

Heat pumps and boiler for DHW and HVAC reheat

+ Shopping centers

Large hot water boilers for catering and DHW;

Cold rooms for food service

+ Airports

Large hot water and steam boilers for catering;
Cold rooms for food service

+ Industries

Hot water and steam for process applications

Viessmann Middle East FZE
PO BOX 341330
Dubai Silicon Oasis Building
E-Wing Office No. 605
Dubai, United Arab Emirates
Telephone +971 (4) 372 42 40
Email: info-me@viessmann.ae
www.viessmann.ae

Your trade partner

AE 05/2022

Copyright Viessmann.
Duplication and alternative use
only with prior written consent.
Subject to modifications.
