

TopTechnology

Aida

Versatile serve-over display cabinet for bakery products



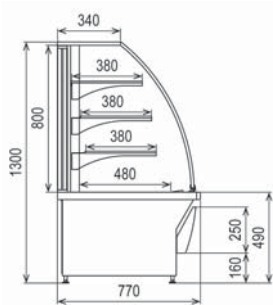
- Versatile with several cabinet from serve-over cabinets to bake off and hot counters
- Fits any store concept with two glass types and three body colours (gold, black and stainless steel)
- Beautiful styling and lighting present the most delicious looking products
- Easy to maintain and clean
- Excellent technical performance where a constant temperature is guaranteed, even for the most delicate pastry
- Several energy efficiency improving features available which lower energy consumption and save costs

Technical specifications

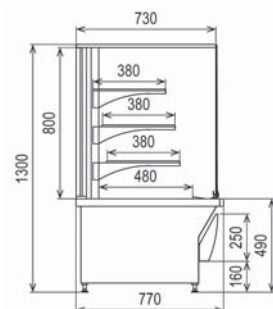
Aida serve-over



AIDA-SO



AIDA-SO-RG



Model*	AIDA-60-SO	AIDA-90-SO	AIDA-90-SO ESM	AIDA-120-SO	AIDA-120-SO ESM
Body colour	Stainless steel, black or gold	Stainless steel, black or gold	Stainless steel, black or gold	Stainless steel, black or gold	Stainless steel, black or gold
Inner body	Galvanised steel	Galvanised steel	Galvanised steel	Galvanised steel	Galvanised steel
External length (mm)	600	900	900	1200	1200
External depth (mm)	770	770	770	770	770
External height (mm)	1300	1300	1300	1300	1300
Internal length (mm)	520	820	820	1120	1120
Internal depth (mm)	480	480	480	480	480
Internal height (mm)	800	800	800	800	800
Weight (net/gross kg)	143/158	170/190	170/190	225/245	225/245
Refrigerated area (m2)	0,84	1,32	1,32	1,81	1,81
Temperature range (°C)	+2...+4	+2...+4	+2...+4	+2...+4	+2...+4
Power input (W)	384	404	344	584	451
Power supply (V/Hz)	230/50	230/50	230/50	230/50	230/50
Fuse (A)	10	10	10	10	10
Running amps (A)	2,2	2,3	1,9	3,3	2,5
Energy consumption (kWh/24h)	7,7	8,4	7,1	12,6	9,7
Defrost (W)	160	200	200	300	300
Refrigerant	R404A	R404A	R404A	R404A	R404A
Refrigerant charge (g)	350	360	360	500	500
Optional features					
Retro glass (RG)	■	■	■	■	■
Refrigerant R290	-	■	-	-	-

* SO = Serve over display, ESM = Low energy fan

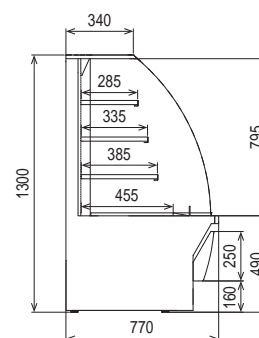
Technical specifications

Aida self-service

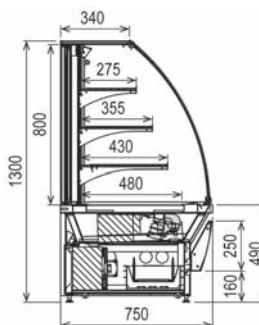


Model*	AIDA-90-SS	AIDA-90-SS ESM	AIDA-120-SS	AIDA-120-SS ESM	AIDA-90-SSO/SSL	AIDA-120-SSO/SSL
Body colour	Stainless steel, black or gold	Stainless steel, black or gold	Stainless steel, black or gold	Stainless steel, black or gold	Stainless steel, black or gold	Stainless steel, black or gold
Inner body	Galvanised steel	Galvanised steel	Galvanised steel	Galvanised steel	Galvanised steel	Galvanised steel
External length (mm)	880	880	1200	1200	900	1200
External depth (mm)	770	770	770	770	770	770
External height (mm)	1300	1300	1300	1300	1300	1300
Internal length (mm)	815	815	1135	1135	820	1120
Internal depth (mm)	460	460	460	460	480	480
Internal height (mm)	820	820	820	820	800	800
Weight (net/gross kg)	146/164	146/164	225/245	225/245	146/164	225/245
Refrigerated area (m2)	1,18	1,18	1,67	1,67	1,18	1,67
Temperature range (°C)	+0...+2	+0...+2	+0...+2	+0...+2	+2...+8	+2...+8
Power input (W)	792	715	1067	947	765	965
Power supply (V/Hz)	230/50	230/50	230/50	230/50	230/50	230/50
Fuse (A)	10	10	10	10	10	10
Running amps (A)	4,5	4,0	6,0	5,4	4,3	5,4
Energy consumption (kWh/24h)	17,0	15,9	23,0	21,2	16,9	18,5
Defrost (W)	250	250	350	350	200	300
Refrigerant	R404A	R404A	R404A	R404A	R404A	R404A
Refrigerant charge (g)	600	600	700	700	400	700
Optional features						
Refrigerant R290	-	-	-	-	■	-

AIDA-SS



AIDA-SSO

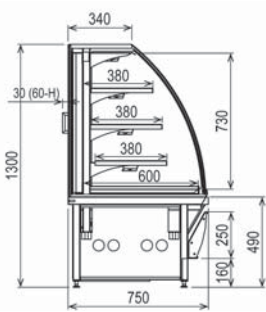


* SS = Self service display, ESM = Low energy fan, SSO/SSL = Self service and self over display

Technical specifications Aida hot counter



AIDA-H



Model*	Aida-60-H	Aida-90-H
Body colour	Stainless steel	Stainless steel
Inner body	Galvanised steel	Galvanised steel
External length (mm)	600	900
External depth (mm)	770	770
External height (mm)	1300	1300
Internal length (mm)	520	820
Internal depth (mm)	480	480
Internal height (mm)	800	800
Weight (net/gross kg)	143/158	146/164
Refrigerated area (m2)	0,84	1,18
Temperature range (°C)	+65...+80	+65...+80
Power input (W)	996	1600
Power supply (V/Hz)	230/50	230/50
Fuse (A)	10	10
Running amps (A)	5,6	7,0
Energy consumption (kWh/24h)	14,4	19,2

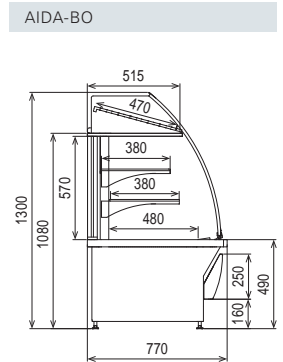
* H = Hot display

Technical specifications

Aida bake-off



Model*	Aida-60-BO	Aida-60-BO ESM	Aida-90-BO	Aida-90-BO ESM	Aida-120-BO	Aida-120-BO ESM
Body colour	Stainless steel, black or gold	Stainless steel, black or gold	Stainless steel, black or gold	Stainless steel, black or gold	Stainless steel, black or gold	Stainless steel, black or gold
Inner body	Galvanised steel	Galvanised steel	Galvanised steel	Galvanised steel	Galvanised steel	Galvanised steel
External length (mm)	600	600	900	900	1200	1200
External depth (mm)	770	770	770	770	770	770
External height (mm)	1300	1300	1300	1300	1300	1300
Internal length (mm)	520	520	820	820	1120	1120
Internal depth (mm)	480	480	480	480	480	480
Internal height (mm)	800	800	800	800	800	800
Weight (net/gross kg)	143/158	143/158	146/164	146/164	225/245	225/245
Refrigerated area (m2)	0,84	0,84	1,32	1,32	1,81	1,81
Temperature range (°C)	+2...+4	+2...+4	+2...+4	+2...+4	+2...+4	+2...+4
Power input (W)	404	344	404	344	584	474
Power supply (V/Hz)	230/50	230/50	230/50	230/50	230/50	230/50
Fuse (A)	10	10	10	10	10	10
Running amps (A)	2,3	1,9	2,3	1,9	3,3	2,7
Energy consumption (kWh/24h)	7,7	7,1	8,6	6,5	12,6	9,7
Defrost (W)	200	200	200	200	300	300
Refrigerant	R404A	R404A	R404A	R404A	R404A	R404A
Refrigerant charge (g)	360	360	360	360	500	500
Optional features						
Refrigerant R290	-	-	■	■	-	-



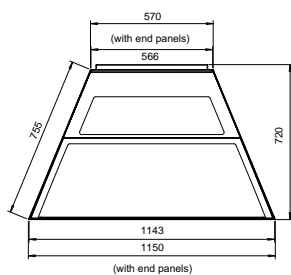
* BO = Bake off display, ESM = Low energy fan

Technical specifications

Aida external angle



AIDA-EA SO



Model*	AIDA-EA-45-SO
Body colour	Stainless steel, black or gold
Inner body	Galvanised steel
External length (mm)	1180 (570 back)
External depth (mm)	730
External height (mm)	1300
Internal length (mm)	900/550
Internal depth (mm)	420
Internal height (mm)	800
Weight (net/gross kg)	0,97
Refrigerated area (m2)	+6...+8
Temperature range (°C)	384
Power input (W)	230/50
Power supply (V/Hz)	10
Fuse (A)	2,2
Running amps (A)	7,7
Energy consumption (kWh/24h)	160
Refrigerant	R404A
Refrigerant charge (g)	350

* EA = External angle display, SO = Serve over display

Size and model options

Length options



Aida length 600mm



Aida length 900mm



Aida length 1200mm

Model options



Aida open front self-service (SS model)



Aida open front with sliding doors on the back side (SSO model)



Aida body colour gold



Aida retroglass (RG model)



Aida body colour stainless steel



Refrigeration systems
product catalogue
at App store.

Austria
Viessmann Ges.m.b.H.
Telephone +43 72 42 623 81-100
info@viessmann.at
www.viessmann.at

Denmark
Norpe ApS
Telephone +45 4120 5420
marketing@norpe.fi
www.norpe.dk

Estonia
Norpe Eesti Oü
Telephone +372 675 5150
info@norpe.ee
www.norpe.ee

Finland
Norpe Oy
Telephone +358 19 537 8000
marketing@norpe.fi
www.norpe.com
Norpe Suomi Oy
Telephone +358 19 537 8000
marketing@norpe.fi
www.norpe.fi

France
Viessmann Technique du Froid S.à.r.l.
Telephone +33 3 87291700
france@viessmann-refrigeration.com/fr
www.viessmann.fr

Germany
Viessmann K hlsysteme GmbH, Hof
Telephone +49 9281 814-0
Viessmann K hlsysteme GmbH, Mainz
Telephone +49 61315 7046-17
kuehlsysteme@viessmann.de
www.viessmann.de

Ireland
Viessmann Refrigeration Systems Limited
Telephone +353 1 617 7930
sales@viessmann-coldtech.ie
www.viessmann.co.uk

Latvia
Norpe Latvia
Telephone +371 6782 8449
info@norpe.lv
www.norpe.com

Norway
Norpe AS
Telephone +47 3336 3500
post@norpe.no
www.norpe.no

Poland
Viessmann Systemy Chłodnicze Sp. z o.o.
Telephone +48 22 882 0020
norpe@norpe.pl
www.viessmann.pl

Russia
Viessmann Group – Norpe Moscow
Norpe St. Petersburg
Telephone +7 499 277 1260
www.viessmann.ru

Sweden
Norpe AB
Telephone +46 8 5941 1200
info@norpe.se
www.norpe.se

Switzerland
Viessmann (Schweiz) AG
Telephone +41 56 418 67 11
info@viessmann.ch
www.viessmann.ch

United Arabian Emirates
Viessmann Middle East FZE
Telephone +971 43724247
refrigeration@viessmann.ae
www.viessmann.ae

United Kingdom
Viessmann Refrigeration Systems Limited
Telephone +44 1952 457157
sales@viessmann-coldtech.co.uk
www.viessmann.co.uk